

STRUCTURED LIST

Mark	Quantity	Size	Length (mm)	Width (mm)	Grade	Weight each (kg)	Total Weight (kg)	Surface Area (m²/part)	Total Surface (m²)
BR1	1	FL400X10							
BR1	1	FL400X10	5,907		S275	185.5	185.5	4.844	4.844
							185.5		4.844
C1	1	UC254x254x73							
C1	1	UC254x254x73	2,952		S355	177.8	177.8	3.670	3.670
F3	2	PLT20x254	404	254	S355	16.1	32.2	0.232	0.463
							210.0		4.133
C2	1	UC254x254x73							
C2	1	UC254x254x73	2,952		S355	177.8	177.8	3.670	3.670
F2	2	PLT20x254	404	254	S355	16.1	32.2	0.232	0.463
							210.0		4.133
R1	2	UC254x254x89							
FEnd Plate	2	PLT20x256.3	660	256	S355	26.6	106.3	0.375	1.501
FStiffener	4	PLT14.2x123	224	123	S355	3.0	24.4	0.064	0.515
R1	1	UC254x254x89	5,908		S355	525.2	1,050.4	9.011	18.022
							1,181.1		20.037
	21						1,786.6		33.148

MATERIAL LIST - SUMMARY



Mark	Size	Quantity	Grade	Length (mm)	Width (mm)	Weight each (kg)	Total Weight (kg)	Surface Area (m²/part)	Total Surface (m²)	Area (m²)
FL400X10										
BR1	FL400X10	1	S275	5,907		185.5	185.5	4.844	4.844	
		1		5,907			185.5		4.844	
UC254x254x73										
C1	UC254x254x73	1	S355	2,952		177.8	177.8	3.670	3.670	
C2	UC254x254x73	1	S355	2,952		177.8	177.8	3.670	3.670	
		2		5,904			355.5		7.341	
UC254x254x89										
R1	UC254x254x89	2	S355	5,908		525.2	1,050.4	9.011	18.022	
		2		11,816			1,050.4		18.022	
PLT14										
FStiffener	PLT14.2x123	8	S355	224	123	3.0	24.4	0.064	0.515	0.027
		8					24.4		0.515	0.219
PLT20										
F2	PLT20x254	2	S355	404	254	16.1	32.2	0.232	0.463	0.103
F3	PLT20x254	2	S355	404	254	16.1	32.2	0.232	0.463	0.103
FEnd Plate	PLT20x256.3	4	S355	660	256	26.6	106.3	0.375	1.501	0.169
		8					170.7		2.427	1.087

Mark	Size	Quantity	Grade	Length (mm)	Width (mm)	Weight each (kg)	Total Weight (kg)	Surface Area (m ² /part)	Total Surface Area (m ²)	Area (m ²)
------	------	----------	-------	----------------	---------------	------------------------	-------------------------	-------------------------------------------	-----------------------------------------------	---------------------------

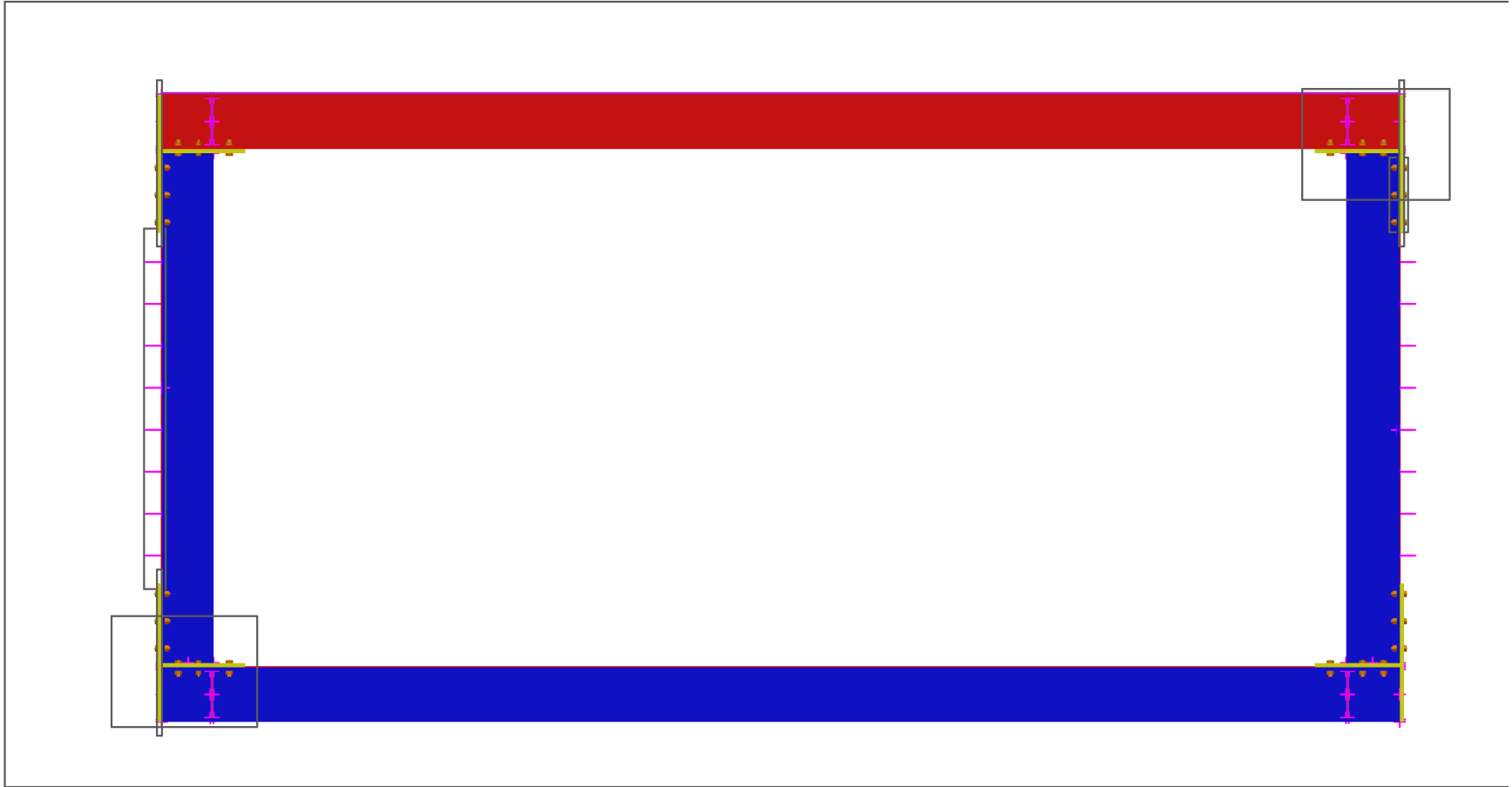
Threaded Studs

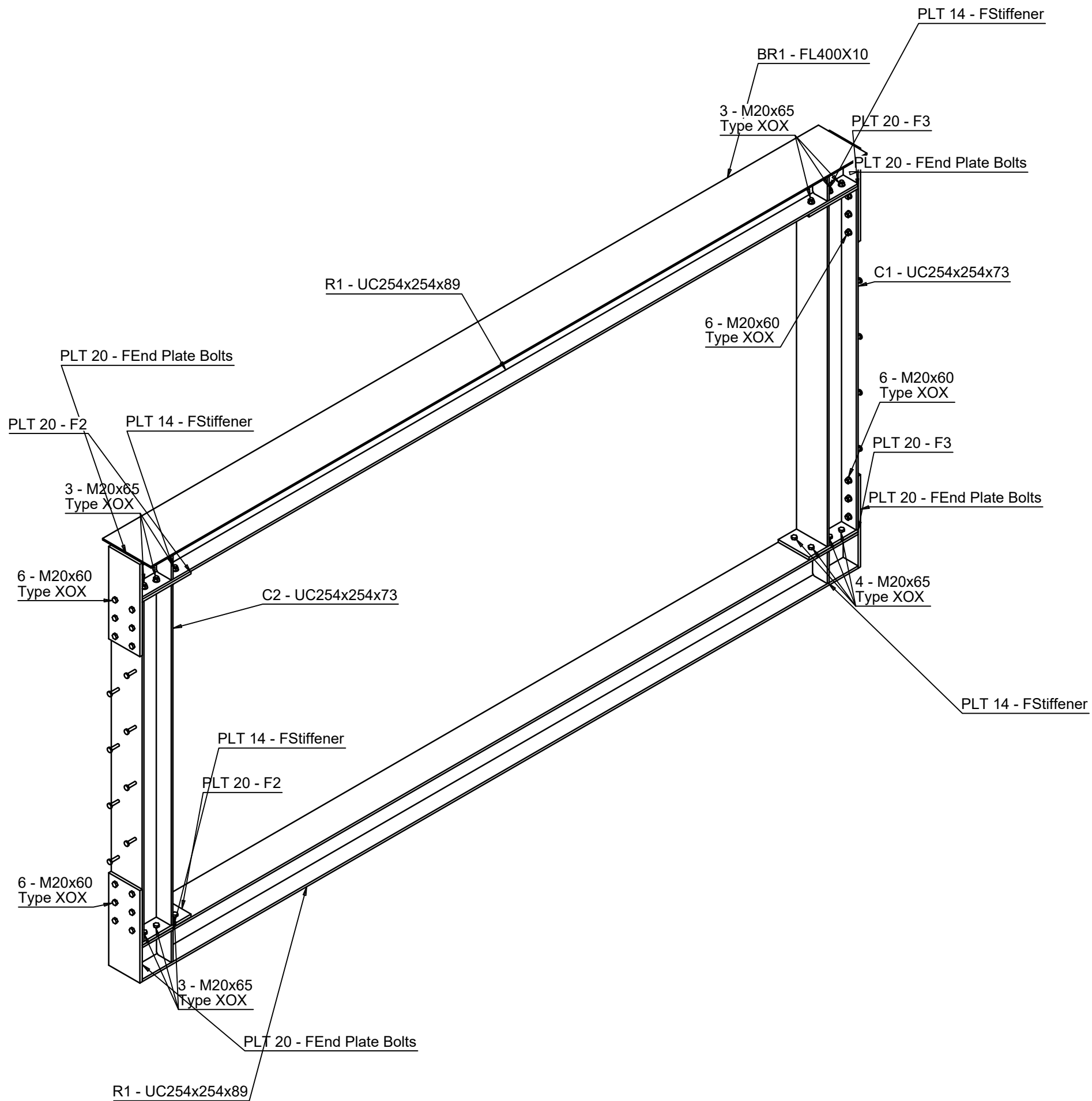
none-1	13918 SD S235J2G3 16 75	16	S235J2G3	600		1.2	26			
		16					26			
		37					1,789.1		33.148	



BOLT LIST

Size	Length (mm)	Grade	Coating	Quantity	Type	Weight each (kg)	Total Weight (kg)	Description
M20 x 65 XOX 8.8 - Bright Zinc Plated -	65	8.8	Bright Zinc	24	XOX	0.3	7.0	
M20 x 60 XOX 8.8 - Bright Zinc Plated -	60	8.8	Bright Zinc	24	XOX	0.3	6.7	
				48			13.8	
				48			13.8	





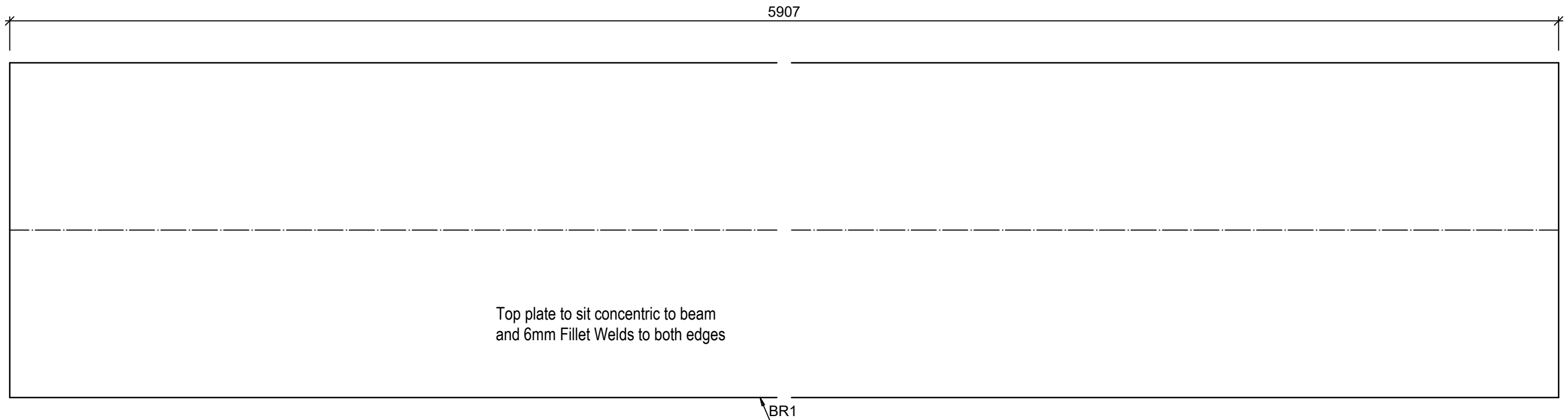
Detail

General Notes

1. This drawing must not be scaled.

Index	Date	Description
REVISIONS		
Autodesk®		
CLIENT Dylan Watkins		
PROJECT BOX FRAME - The Coach House Sandridge Park, Sandridge		
DRAWING TITLE Box Frame 3D with parts		
DRAWN BY SB	CHECKED BY SB	DATE 11/07/2023
		SCALE As Noted
PROJECT No. PA-2023-318	DRAWING No. [G] - 100	REV Rev0

LOT	QTY
	1



1 No. Mkd BR1 (Coating as specified)

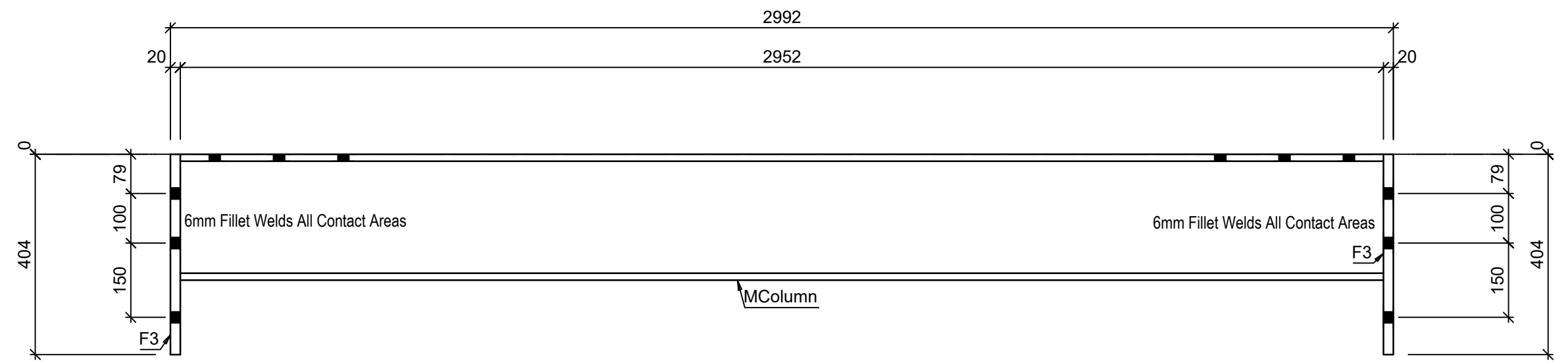
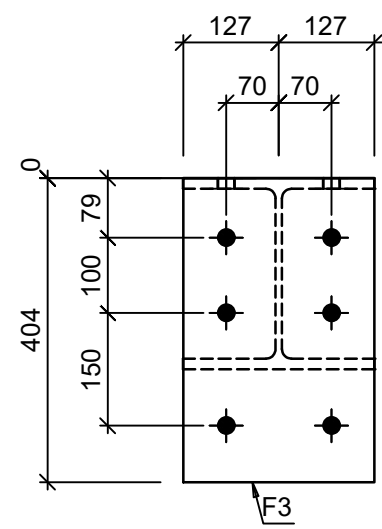
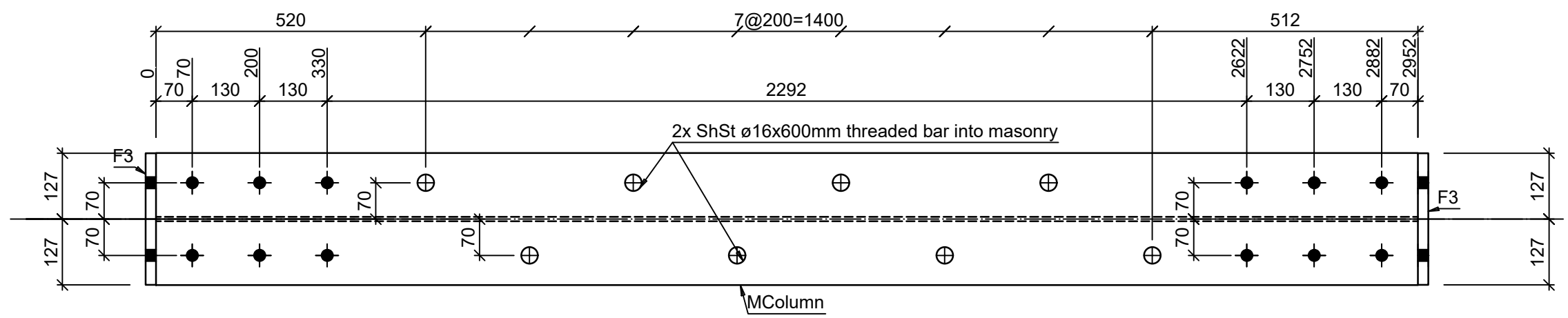
Mark	Quantity	Profile	Length	Material	Area (m ²)	Weight (kg)
BR1	1	Values for ONE assembly				
BR1	1	FL400X10	5907.4	S275	4.84	185.49
Totals for ONE assembly					4.84	185.49

General Notes

1. All holes 22Ø U.N.O.
2. All welds continuous 6mm fillet U.N.O.
3. This drawing must not be scaled.

Index	Date	Description	Author
Autodesk®		CONTRACT	BOX FRAME - The Coach House Sandridge
		DESCRIPTION	T plate
DRAWN BY SB	DATE 11/07/2023	SCALE 1:5	JOB No. PA-2023-318 DRG No. [A] - BR1 Rev. Rev0

LOT	QTY
	1



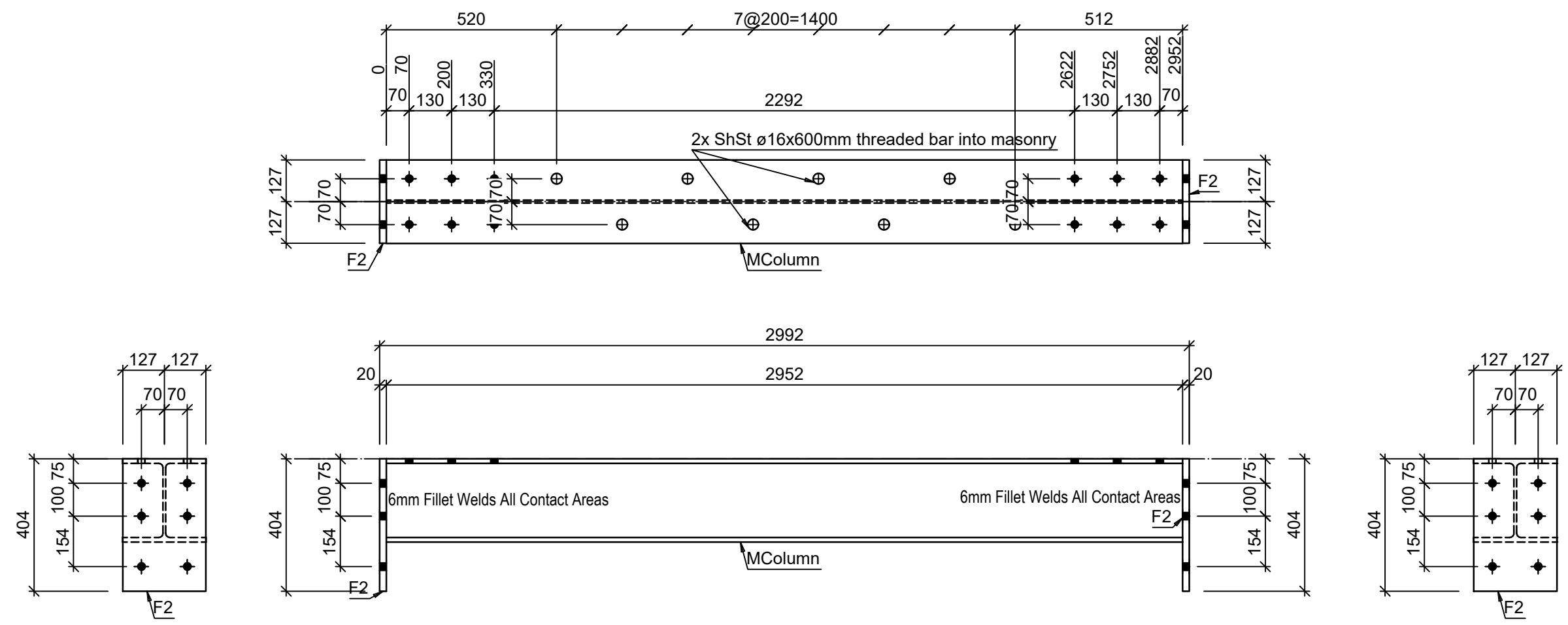
1 No. Mkd C1 (Coating as specified)

Mark	Quantity	Profile	Length	Material	Area (m ²)	Weight (kg)
C1	1	Values for ONE assembly				
MCColumn	1	UC254x254x73	2952	S355	3.67	177.76
F3	2	PLT20x254	404.0	S355	0.23	32.22
none-1	8	13918 SD S235J2G3 16 75	75.0	S235J2G3	0.00	211.28
Totals for ONE assembly					4.13	

- General Notes**
- All holes 22Ø U.N.O.
 - All welds continuous 6mm fillet U.N.O.
 - This drawing must not be scaled.

Index	Date	Description	Author
Autodesk ®		CONTRACT	BOX FRAME - The Coach House Sandridge
		DESCRIPTION	Column
DRAWN BY	DATE	SCALE	JOB No.
SB	11/07/2023	1:10	PA-2023-318
		DRG No.	Rev.
		[A] - C1	Rev0

LOT	QTY
	1



1 No. Mkd C2 (Coating as specified)

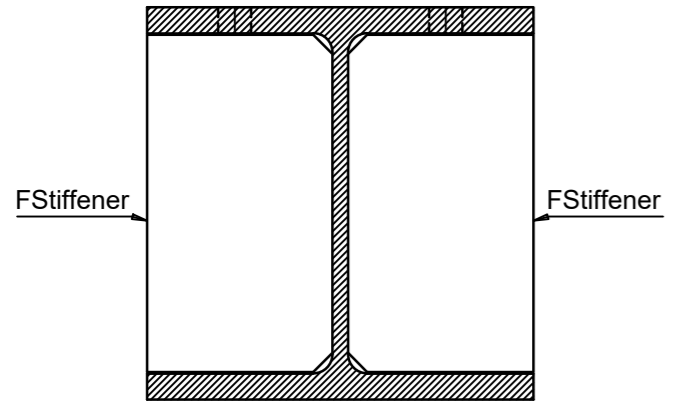
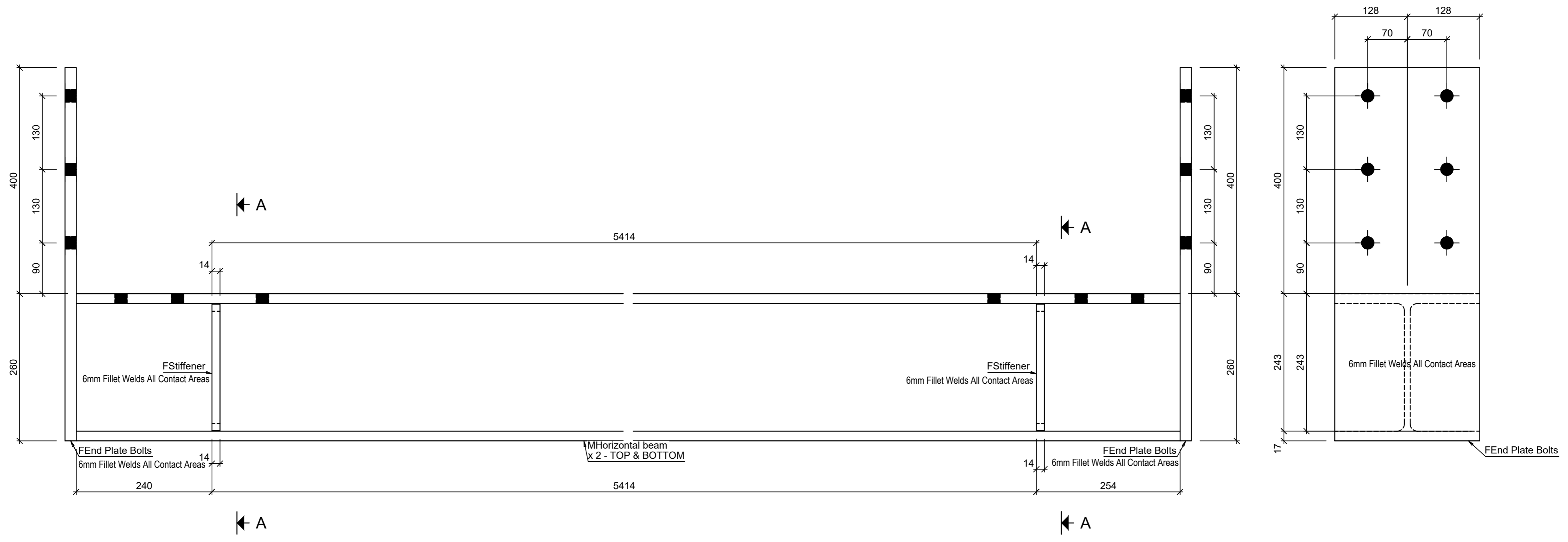
Mark	Quantity	Profile	Length	Material	Area (m ²)	Weight (kg)
C2	1	Values for ONE assembly				
MCColumn	1	UC254x254x73	2952	S355	3.67	177.76
F2	2	PLT20x254	404.0	S355	0.23	32.22
none-1	8	13918 SD S235J2G3 16 75	75.0	S235J2G3	0.00	1.28
Totals for ONE assembly					4.13	211.26

General Notes

- All holes 22Ø U.N.O.
- All welds continuous 6mm fillet U.N.O.
- This drawing must not be scaled.

Index	Date	Description	Author
Autodesk ®		CONTRACT	BOX FRAME - The Coach House Sandridge
		DESCRIPTION	Column
DRAWN BY SB	DATE 11/07/2023	SCALE 1:15	JOB No. PA-2023-318 DRG No. [A] - C2 Rev. Rev0

LOT	QTY
	2



A - A

2 No. Mkd R1 (Coating as specified)

Mark	Quantity	Profile	Length	Material	Area (m ²)	Weight (kg)
R1	2	Values for ONE assembly				
FEnd Plate Bolts	2	PLT20x256.3	660.3	S355	0.38	53.14
FStiffener	4	PLT14.2x123	223.7	S355	0.06	12.20
MHorizontal beam	1	UC254x254x89	5908.0	S355	9.01	596.32
Totals for ONE assembly					10.02	

General Notes		Index	Date	Description	Author
1. All holes 22Ø U.N.O. 2. All welds continuous 6mm fillet U.N.O. 3. This drawing must not be scaled.					
		Autodesk		CONTRACT	
				BOX FRAME - The Coach House Sandridge	
				DESCRIPTION	
				TOP & BOTTOM HORIZONTAL BEAMS	
DRAWN BY	DATE	SCALE	JOB No.	DRG No.	Rev.
SB	11/07/2023	1:5	PA-2023-318	[A] - R1	Rev0



8 No. PLT14.2x123 - Mkd FStiffener

General Notes
 1. All holes 22Ø U.N.O.
 2. This drawing must not be scaled.

Index	Date	Description	Author
		CONTRACT	
		BOX FRAME - The Coach House Sandridge	
DRAWN BY		DATE	SCALE
SB		11/07/2023	1:1
JOB No.		DRG No.	Rev.
PA-2023-318		[S] - FStiffener	Rev0